



MT Fiber Optic (D38999 III) KJMT Series

MT Fiber Optics supporting VITA 87 D38999-Style Solution

Features & Benefits

- VITA 87 and Sensor Open System Architecture (SOSA) compliant.
- Intermateable to all VITA 87 compliant products which eliminates the reliance on sole-source vendors with proprietary designs.
- High bandwidth and high density Fiber Optics with 15-4 arrangement supporting up to 96 optical channels.
- Three shell sizes & ferrule arrangements 11-1, 13-2 and 15-4.
- Physical contact (PC-MT) and Lensed (L-MT) in 12, 24, 16 and 32 channels respectively in single-mode or multi-mode options.
- MT ferrule end-faces are recessed to avoid installation damage using the D38999-Style Series III "Scoop Proof" design.

ITT Cannon's KJMT Fiber Optic Series offers a modular and cost-effective approach to support your high-bandwidth and high-density Radar, Electronic Warfare (EW) Systems, Communications, Antenna/Sensor and Embedded Computing applications.

The KJMT 38999-style solution supports the VITA 87 and Sensor Open System Architecture (SOSA) requirements, while offering established MT ferrule insertion with removable, rear-capture plate system.

As military and aerospace platforms drive higher density and higher bandwidth requirements in a single sealed-chassis connector, the KJMT Series is an ideal solution for Fiber Optics applications.



Ordering Guide - KJMT



1- Series	2- Shell Style	3- Material	4- Shell Size	5- Arrangement	6- Position	7- Insert
KJMT	0	M	11	-1	N	1

1 - Series	
KJMT	38999-Style KJ with MT Termini
2 - Shell Style	
0	Wall Mount Receptacle
6	Straight Plug
7	Jam Nut Receptacle

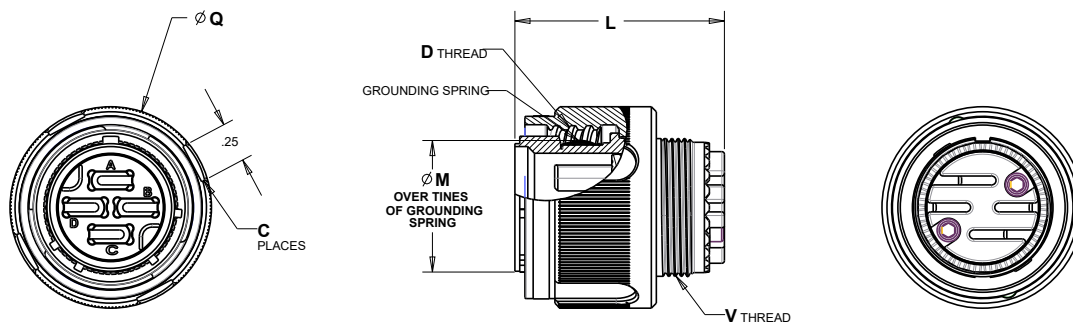
3 - Material & Plating	
F	Aluminium Alloy, Electroless Nickel
W	Aluminium Alloy, O.D. Cadmium
Z	Aluminium Alloy, Black Zinc Nickel
T	Aluminium Alloy, Teflon Nickel
K	Stainless Steel, Passivated
M	Composite, Electroless Nickel
J	Composite, O.D. Cadmium
4 - Shell Size*	
11	11,13,15

5 - Arrangement	
-1	1 Terminus for shell size 11
-2	2 Termini for shell size 13
-4	4 Termini for shell size 15
6 - Position	
N (Normal), A, B, C, D, E Polarization is Per D38999 Series III	
7- Insert Orientation	
1	0 degrees (style 1)
2	45 degrees (style 2)

Note - MT Ferrules and cable systems are sold separately and are defined in the cable selection guide.

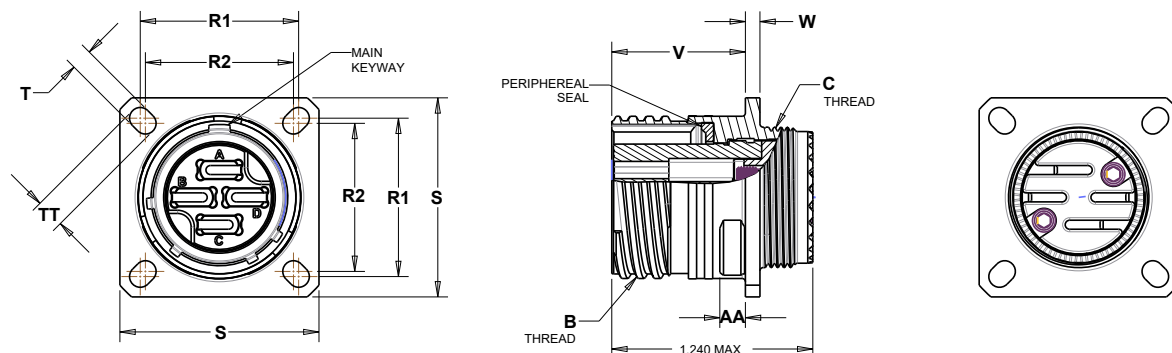
*Contact factory for alternative shell size and layouts including 21-6, 23-8 and 25-10

Straight Plug - Shell Style 6



Size	C	D - Class 2B Blunt Start Per ES - 100/1	D Thread MOD Minor Dia.	L Max	Ø M Min	Ø Q Max.	V Thread Metric Thread Per ES-112
11	4	.7500 - 0.1P - 0.3L-TS	.7142 / .7112	1.307	.577	.969	M15X1 - 6g 0.100R
13	4	.8750 - 0.1P - 0.3L-TS	.8392 / .8362	1.307	.649	1.141	M18X1 - 6g 0.100R
15	4	1.000 - 0.1P - 0.3L-TS	.9642 / .9612	1.307	.819	1.266	M22X1 - 6g 0.100R

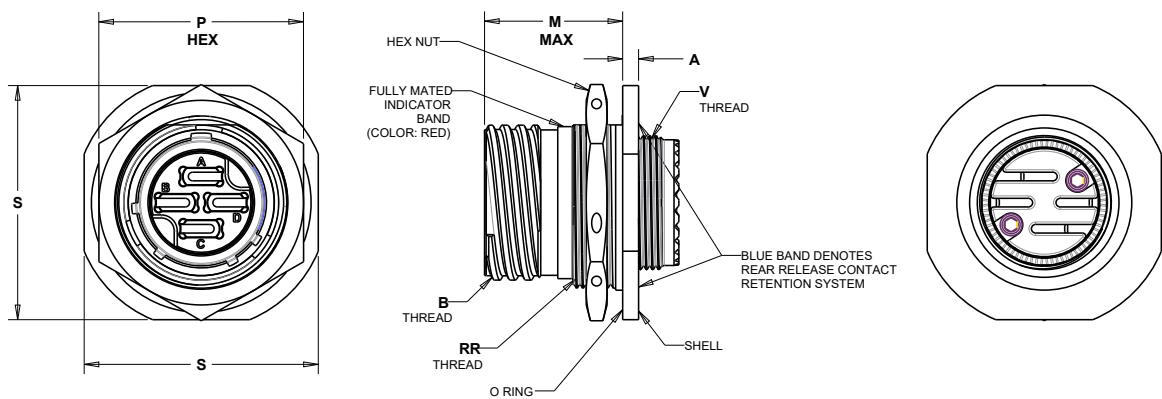
Wall Mount Receptacle - Shell Style 0



Size	AA Max Panel Thickness	B - Class 2A Blunt Start Per ES - 100/1	S	R1	R2	T ± .007	TT ± .007	V +.000 -.049	W Max	C Thread Metric Thread Per ES-112
11	.234	.7500 - 0.1P - 0.3L-TS	1.031	.812	.719	.128	.194	.820	.098	M15X1 - 6g 0.100R
13	.234	.8750 - 0.1P - 0.3L-TS	1.125	.906	.812	.128	.194	.820	.098	M18X1 - 6g 0.100R
15	.234	1.000 - 0.1P - 0.3L-TS	1.219	.969	.906	.128	.173	.820	.098	M22X1 - 6g 0.100R

Specification and other data are based on information available at the time of printing, and are subject to change without notice.

Jam Nut - Shell Style 7

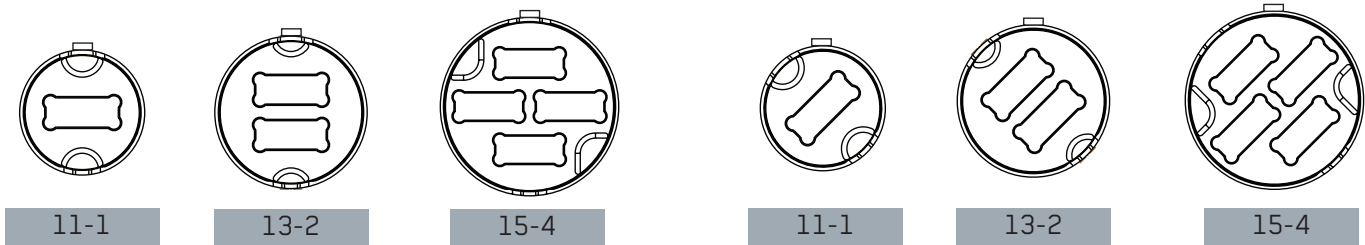


Size	A +.018 -.021	B - Class 2A Blunt Start Per ES - 100/1	M Max	P Hex +.017 -.016	S ±.014	C Thread Metric Thread Per ES-112	RR Thread Metric Thread
11	.104	.7500 - 0.1P - 0.3L-TS	.889	1.000	1.250	M15X1 - 6g 0.100R	M20X1-6g 0.100R
13	.104	.8750 - 0.1P - 0.3L-TS	.889	1.188	1.375	M18X1 - 6g 0.100R	M25X1-6g 0.100R
15	.104	1.000 - 0.1P - 0.3L-TS	.889	1.312	1.500	M22X1 - 6g 0.100R	M28X1-6g 0.100R

Arrangements & Insert Orientation- Plug Side

Style 1 (0 Degree)

Style 2 (45 Degree)



Sample Part Numbers- Normal Clocking, Mated Pair

Wall Mount Receptacle	
KJMT0Z11-1N2	Aluminum, Black Zinc-Nickel, Size: 11, MT Count: 1, Key Orient: N, Insert Orient: Style 2
KJMT0F13-2N1	Aluminum, Electroless Nickel, Size: 13, MT Count: 2, Key Orient: N, Insert Orient: Sytle 1
KJMT0M15-4N1	Composite, Electroless Nickel, Size: 15, MT Count: 4, Key Orient: N, Insert Orient: Sytle 1
Jam Nut Receptacle	
KJMT7F11-1N2	Aluminum, Electroless Nickel, Size: 11, MT Count: 1, Key Orient: N, Insert Orient: Style 2
KJMT7Z13-2N1	Aluminum, Black Zinc-Nickel, Size: 13, MT Count: 2, Key Orient: N, Insert Orient: Sytle 1
KJMT7M15-4N2	Composite, Electroless Nickel, Size: 15, MT Count: 4, Key Orient: N, Insert Orient: Style 2

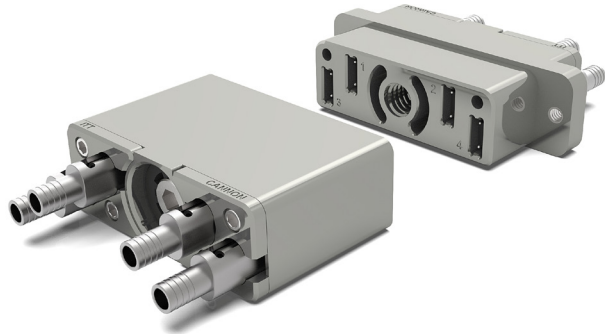
In-line Plug	
KJMT6Z11-2N2	Aluminum, Black Zinc-Nickel, Size: 11, MT Count: 1, Key Orient: N, Insert Orient: Style 2
KJMT6F13-2N1	Aluminum, Electroless Nickel, Size: 13, MT Count: 2, Key Orient: N, Insert Orient: Sytle 1
KJMT6M15-4N1	Composite, Electroless Nickel, Size: 15, MT Count: 4, Key Orient: N, Insert Orient: Sytle 1
KJMT6F11-2N2	Aluminum, Electroless Nickel, Size: 11, MT Count: 1, Key Orient: N, Insert Orient: Style 2
KJMT6Z13-2N1	Aluminum, Black Zinc-Nickel, Size: 13, MT Count: 2, Key Orient: N, Insert Orient: Sytle 1
KJMT6M15-4N2	Composite, Electroless Nickel, Size: 15, MT Count: 4, Key Orient: N, Insert Orient: Style 2

Specification and other data are based on information available at the time of printing, and are subject to change without notice.



Robust Fiber Optics Portfolio

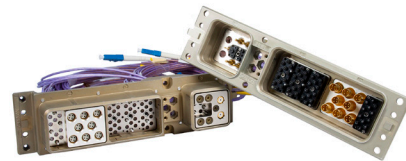
Rectangular Solutions



CJS Rectangular
Center Jack Screw with Four MT Ferrules



Combination Micro (MDM), D-Sub, EN4165
Power, Signal & MT Ferrules



ARINC 600
Power, Signal & MT Ferrules or ARINC 801 Termini

Circular Solutions



JSFC 15-18 Qualified



ARC38999 and ARINC 801 termini
Power, Signal & MT Ferrules



Custom Solutions and Cable Assemblies

Connect with your ITT Cannon representative today or visit us at ittcannon.com

Follow us



NORTH AMERICA

USA - Irvine, CA
+1.800.854.3028
MEXICO - Nogales
+52.631.3110050

EUROPE

GERMANY - Weinstadt
+49.7151.699.0
UK - Basingstoke
+44.1256.347400

ITALY - Lainate
+39.02938721
FRANCE
+33.1.60.04.93.93

ASIA PACIFIC

SINGAPORE
+65 66974205
JAPAN - Kanagawa
+81.462.57.2010

KOREA
+82.2.702.7111

CHINA - Shenzhen City
+86.755.2726.7888

HONG KONG
+852.2732.2720